

Infrared Photodiode

EPD-1300-5-1

Preliminary data

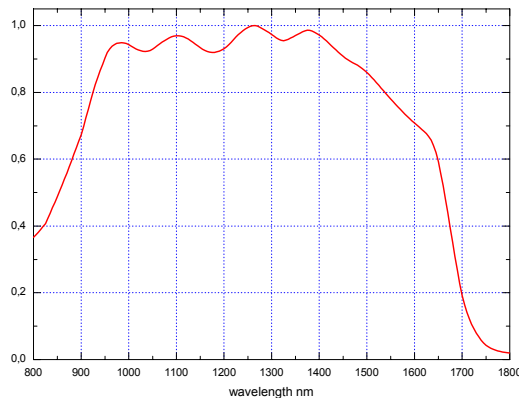
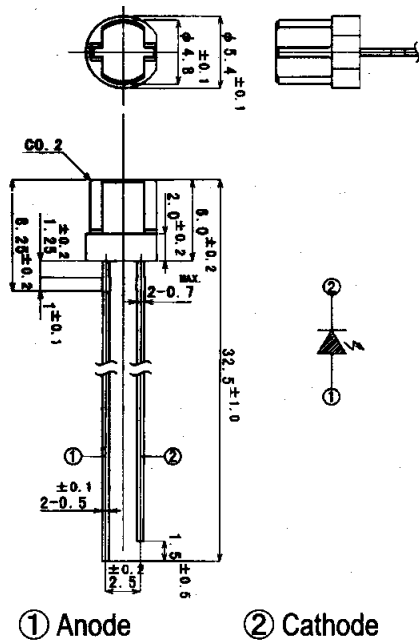
Spectral range	Type	Technology	Case
Infrared	EPD-1300-5-1	InGaAs/InP	5 mm with flat top

Description

Photodiodes with enhanced sensitivity in near infrared range

Applications

Optical communications, spectral analytics, safety equipment



Maximum Ratings

Parameter	Value	Unit
Storage Temperature	-20 to +80	°C
Operating Temperature	-30 to +100	°C
Soldering Temperature	260 for 3 sec.	°C

Optical and Electrical Characteristics

$T_{amb} = 25^{\circ}\text{C}$, unless otherwise specified

Parameter	Test conditions	Symbol	Min	Typ	Max	Unit
Optical active area						
Spectral range at $0.1 S_{\lambda}$		λ_{Smin} - λ_{Smax}		800...1700		nm
Spectral range at $0.5 S_{\lambda}$		λ_{Smin} - λ_{Smax}		920...1600		nm
Acceptance angle at $0.5 S_{\lambda}$				110		deg.
Responsivity	$\lambda = 1300 \text{ nm}$	S_{λ}		0.75		A/W
Dark current	$V_R = 5 \text{ V}, E_e = 0$	I_D		30	120	nA
Reverse voltage	$I_R = 10 \mu\text{A}$	V_R		35		V
Junction capacitance	$V_R = 5 \text{ V}, E_e = 0$	C		40		pF

rev.01/02