

Waterproof Optical Multiple-Fiber Connectors

MF Series



■ Features

Waterproof Structure

These waterproof optical multiple-fiber connectors are ideal for outdoor optical fiber transmission systems.

■ Applications

Outdoor optical fiber transfer systems, LAN, CATV, CPU optical channels, etc.

Product Standards

Rating	Operating temperature range	-25°C~70°C	Storage temperature range	-25°C~70°C
--------	-----------------------------	------------	---------------------------	------------

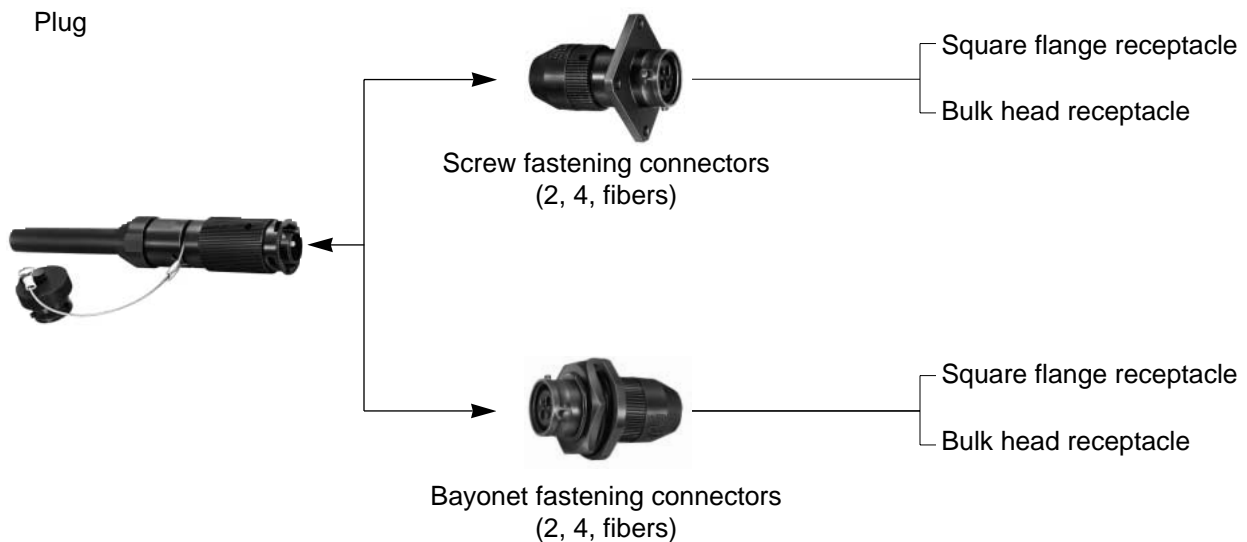
	Item	Test Method (JIS C 5961)	Standard
※	Insertion loss	1,300nm wavelength (LED)	1 dB or less
Mechanical Performance	Cable clamp strength (Pulling in direction of axis)	Apply 148 N of pulling force between connector and cable.	1) Insertion loss fluctuation after test: 0.3 dB or less 2) No irregularity in clamp section or cable
	Repetitive operation	50 times	
	Vibration resistance	Vibration range of 10 to 55 Hz, in 2 directions, 2 hours each	
	Shock resistance	Acceleration of 981 m/s ² , in the direction of 2 axes, 10 times each	
Environmental performance	Temperature cycle	Temperature-40 to 75°C, 42 cycles	1) Insertion loss fluctuation after test: 0.3 dB or less 2) No damage, cracks, or part looseness
	Heat resistance	Leave for 960 hours at a temperature of 85°C	
	Cold resistance	Leave for 960 hours at a temperature of -25°C	
	Salt fog	Left in a 5% concentration of salt fog for 48 hours	No conspicuous corrosion

※Optical performance is for GI-50/125 fiber.

Materials

Part Name	Material
Plug housing	Brass/Aluminum
Coil spring	Stainless steel
Ferrule	Zirconia
Jack housing	Brass/Aluminum
Split sleeve	Copper alloy
Receptacle housing	Brass/Aluminum
Ferrule case	Polybutylene terephthalate

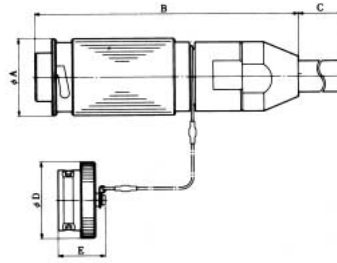
Types



※Cabling for use with plugs and jacks consists of group spacers and layer-type cable.

■Bayonet Fastening Type

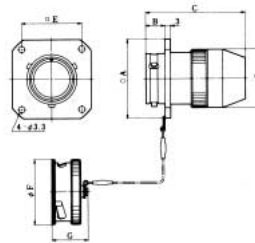
●Plug Housing



Product Number	Number of Fibers	φA	B	C	φD	E
MF14B-WP※S01-0200	2	24	84.7	69	24	21
MF17B-WP※S01-0400	4	27	116.5	69	27	21

※indicates the cable diameter. Please specify φ8, 9, or 10mm dia.

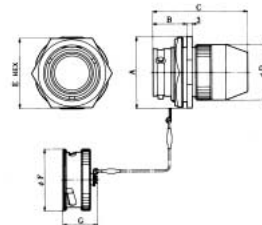
●Square Flange Receptacle Housing



Product Number	Number of Fibers	□A	B	C	φD	□E	φF	G
MF14B-WRF01-0200	2	30	9	45.5	20.5	23	24	18.8
MF17B-WRF01-0400	4	35	9	51.5	25.5	27	27	18.7

NOTE: φ2 to 3mm simplex cable is suitable.

●Bulk Head Receptacle Housing

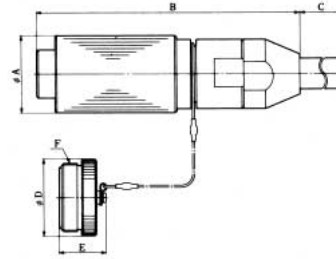


Product Number	Number of Fibers	□A	B	C	φD	□E	φF	G
MF14B-WRB01-0200	2	30	17.5	45.5	20.5	28	24	18.8
MF17B-WRB01-0400	4	34	17.5	51.5	25.5	32	27	18.7

NOTE: φ2 to 3mm simplex cable is suitable.

■Screw Fastening Type

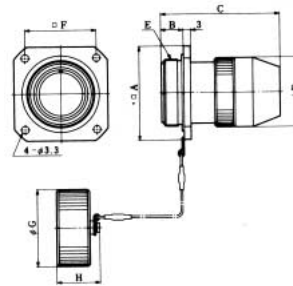
●Plug Housing



Product Number	Number of Fibers	φA	B	C	D	φE	F
MF14S-WP※S01-0200	2	24	84.7	69	24	20.7	M20X1
MF17S-WP※S01-0400	4	27	116.5	69	27	20.7	M22X1

※ indicates the cable diameter.

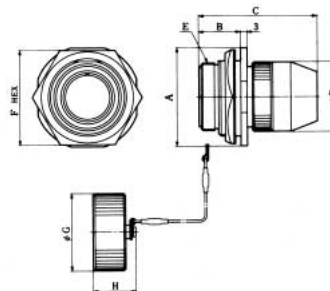
●Square Flange Receptacle Housing



Product Number	Number of Fibers	□A	B	C	φD	E	□F	φG	H
MF14S-WRF01-0200	2	30	10	45.5	20.5	M20X1	23	24	18.5
MF17S-WRF01-0400	4	35	10	51.5	25.5	M22X1	27	27	18.5

NOTE: φ2 to 3mm simplex cable is suitable.

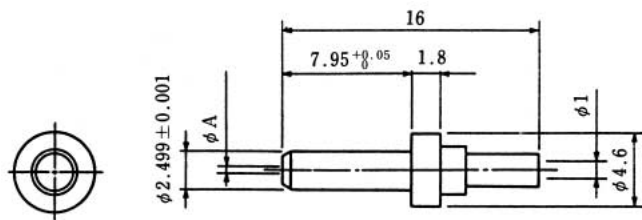
●Bulk Head Receptacle Housing



Product Number	Number of Fibers	□A	B	C	φD	E	□F HEX	φG	H
MF14S-WRB01-0200	2	31	17.5	45.5	20.5	M20X1	32	24	18.5
MF17S-WRB01-0400	4	34	17.5	51.5	25.5	M22X1	32	27	18.5

NOTE: φ2 to 3mm simplex cable is suitable.

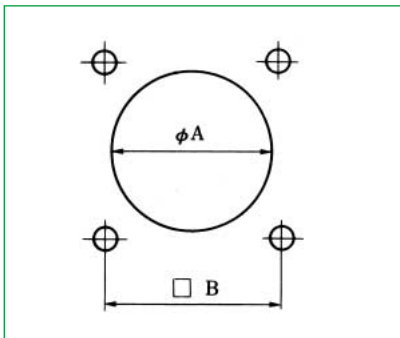
■ Ferrules



HRS No.	Product Number	Dimension A	Suitable Optical Fiber
CL709-0009-0	MF-F3-B124	0.124 ^{+0.001} ₀	GI-50/125
CL709-0010-9	MF-F3-B125	0.125 ^{+0.001} ₀	
CL709-0011-1	MF-F3-B126	0.126 ^{+0.001} ₀	
CL709-0012-4	MF-F3-B127	0.127 ^{+0.001} ₀	
CL709-0013-7	MF-F3-B128	0.128 ^{+0.001} ₀	
CL709-0014-0	MF-F3-E253	0.253 ^{+0.003} ₀	
CL709-0015-2	MF-F3-E233	0.233 ^{+0.003} ₀	

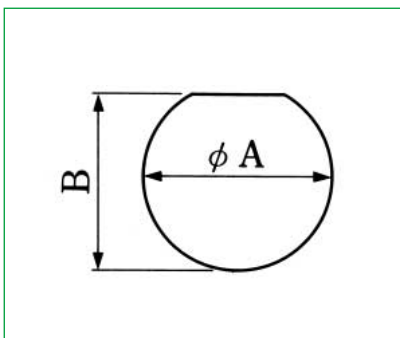
◆ Panel Mounting Hole Dimensions

● Square Flange Receptacle



Product Number	A	B
MF14B-WRF01-0200	21	23
MF14S-WRF01-0200	21	23
MF17B-WRF01-0400	26	27
MF17S-WRF01-0400	26	27

● Bulk Head Receptacle



Product Number	A	B
MF14B-WRB01-0200	22.2	21.2
MF14S-WRB01-0200	24.2	23.2
MF17B-WRB01-0400	24.2	23.2
MF17S-WRB01-0400	24.2	23.2

