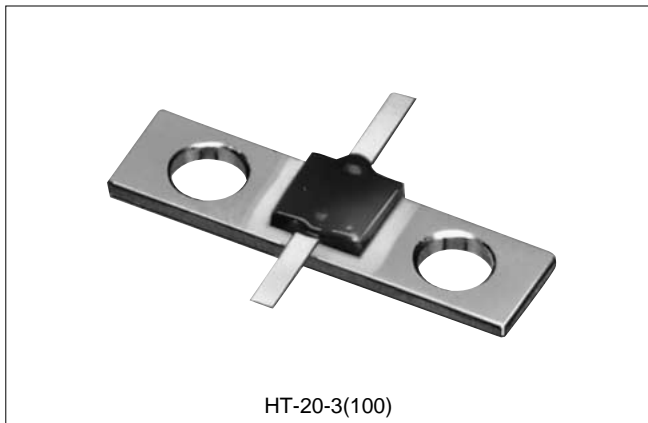


Terminator for the Division Part of a Wilkinson Divider (100ΩType)

HT Series



■Features

1.High Performance

These wide bandwidth/ultra high matching non-reflective terminators use Hirose Electric original high frequency matching technology.

2.Equipped with Tabs

Terminators are equipped with tabs to permit direct mounting to Wilkinson type flat circuits.

3.High Power and Small Size

Beryllia is used for the material of the resistance element to enable the terminator to be of small size and used with high power.

■Product Specifications

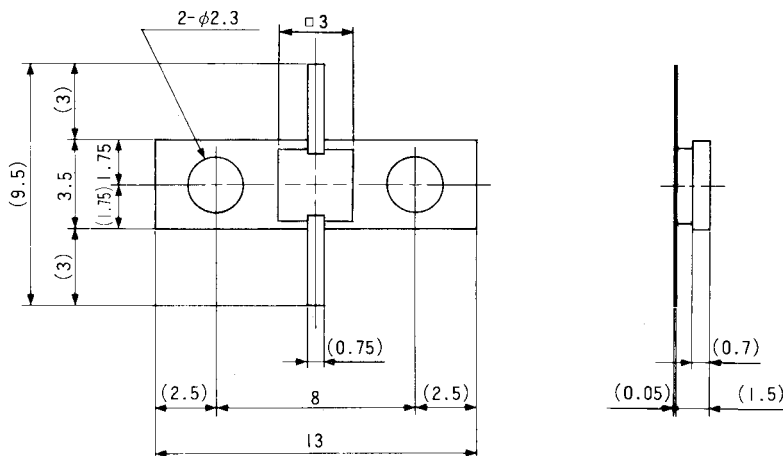
Rating	Rated frequency range	DC to 8.0 GHz	Heat sink temperature at maximum output	+65°CMax.
	Characteristic impedance	100Ω	Operating temperature range	10°Cto +65°C
	Maximum usable power	20W	Operating relative humidity	95% or less
	Resistance value	100±2Ω	Weight	0.4 g

Item	Standard	Conditions
1.Vibration resistance	No electrical disconnections of 1μs or greater No damage, cracks, or parts looseness	Frequency of 10 to 2000 Hz, overall amplitude of 1.52 mm, 98 m/s ² acceleration, in 3 axial directions, 2 hours each
2.Shock resistance	No electrical disconnections of 1μs or greater No damage, cracks, or parts looseness	490 m/s ² acceleration, half sine wave, in 3 axial directions, 3 times each
3.Temperature cycle	No damage, cracks, or parts looseness	(-55°C: 30 min.→5 to 35°C: Within 15 min.→120°C: 30 min →5 to 35°C: Within 15 min.) for 200 cycles

■Material

Part	Material	Processing
External cladding	Copper	Nickel plating
Tabs	Copper	Silver plating
Resistor	Metal film	—

■External Dimensions



⚠ CAUTION: Beryllia is used in this product. Please follow associated laws when disposing.